

## English

### Texts covered this term:

- Letters from the Lighthouse by Emma Carroll
- How a Lighthouse Works by Roman Belyaev
- Here we Are by Oliver Jeffers
- Poems – A range of poets linked to our Black History Month

### Writing outcomes this term:

- Diary Writing
- Descriptive Writing
- Journalistic Writing
- Formal and Informal Letter Writing
- Creative Story Writing
- Non-Fiction Report Writing

Skills – Following the 2014 National Curriculum Expectations

## Maths

### Autumn 1:

- Place Value – rounding and comparing numbers up to 1,000,000
- Addition and Subtraction – column method and problem solving.
- Fractions – addition, subtraction, fractions of amounts, multiplication and division.

### Autumn 2:

- Multiplication – 4 digits x 2 digits in context
- Division - short and long division in context.

### Science: Electricity/Light

- Investigating electricity and its use in the 20<sup>th</sup> and 21<sup>st</sup> century.
- Making a wire circuit
- Making a switch for a wire circuit
- Understanding how circuits and electricity are used through making our own real life example.

## Music

- Following the Music Express syllabus.

### RE – Islam and Sanatama Dharma (Hinduism)

- Exploring the following questions:
- What is the purpose of prayer and why is it important to followers of Islam?
- How responsible are we for the environment and why is it so important to followers of Sanatama Dharma?

# Year 6 Autumn Term 23-24



### Visits and Trips

- PGL (16<sup>th</sup>-20<sup>th</sup> October)
- Kew Archives (3<sup>rd</sup> and 5<sup>th</sup> October)

### Computing Information Technology Skills:

E-safety, word processing, creating multimedia book and critiquing research (relate to topic WW2)

### Computational Skills:

Unit 1: We are Authors  
Creating online multimedia book about WW2.  
Unit 2: We are marketers  
To make a film advertising PGL to future Year 6's

### History: How was life in Chiswick affected by the Sercond World War?

- Examine and explain the reasons for events in WW2.
- Describe, and begin to analyse the roles of different people and the impact of WWII on families and communities
- Use knowledge and understanding to identify and evaluate sources of information, which they use critically to reach and support conclusions.

### Geography: Why should we protect the Earth's polar regions?

- Use factual information to compare and contrast, applying understanding to debate and justify opinions
- To look at the impact of historical and current actions environmentally, determining possible future solutions

### Art:

- To study Portraits through the development of drawing skills.
- Painting linked to climate change exploring the work of important artists

### PSHE – Being me in my world and celebrating differences

- Pupils to recognise their worth as individuals, and setting personal goals;
- To recognise different kinds of responsibilities, rights and duties at home, at school and in the community, and that these can sometimes conflict with each other.
- To identify that their actions affect themselves and others,
- To realise the nature and consequences of racism, teasing, bullying and aggressive behaviours.

### PE Autumn 1 - Tag Rugby

- To be able to pass a rugby ball confidently while in a game situation.
- To understand the rules of tag rugby.
- Be able to demonstrate a range of tactics

### PE Autumn 2 - Football

- To use a range of skills within adapted games situations.
- Be able to dribble confidently with a football.
- To be able to work within a team and find space whilst playing small sided games.
- Understand the rules of football and confidently explain the five key principles.

# Year 6

## Spring Term

### 23 -24

#### English:

##### Texts covered this term:

- Cogheart – Peter Bunzel
- The Arrival – Shaun Tan
- Mortal Engines – Phillip Reeves

##### Writing outcomes this term:

- Writing to entertain
- Writing to inform
- Writing to explain

Skills – Following the 2014 National Curriculum Expectations

#### Maths

##### Spring 1

- Number: decimals
- Number: percentages
- Number: algebra
- Ratio
- Measurement
- Shape

##### Spring 2

- SATS preparation

#### Science – Living things and their habitats, Evolution and Inheritance

- To describe how living things are classified into broad groups according to common observable characteristics and based on similarities and differences, including micro-organisms, plants and animals
- Give reasons for classifying plants and animals based on specific characteristics.
- To research the lives of famous scientist who researched in the field of evolution and adaptation.

#### Music

- Following the Music Express syllabus



#### RE – Buddhism and Humanism (Spring 1) and Christianity (Spring 2)

- Exploring the following questions:
- Who do we look to for inspiration and why?
- What is the most important event to have ever happened?

#### Computing

- Developing presentational skills using Google Slides, considering the audience impact and artistic composition.
- Making a fact file on a variety of countries – linked to our Geography topic on natural disasters.
- Developing an idea for an app, considering management skills necessary to create it, including market research and development.

#### History: How did life in Britain change in the Industrial revolution?

- Exploring how life changed both at work and in the home
- Identifying significant inventions that impacted peoples' lives both then and in the 21<sup>st</sup> century.
- To identify the political changes that took place during the Industrial Revolution.

#### Geography: How do natural disasters impact climate change in the UK and the wider world?

- Explore the following natural disasters in detail and compare the impact across the globe:
- Flooding, Cyclones, Snow storms, Wildfires and Drought.

#### Art – Collage (Spring 1)

- To take inspiration from contemporary artists to develop a piece of collage work which communicates a message about something they are passionate about.
- To develop layered collage techniques using a range of different media.

#### Art- Printing (Spring 2)

- To develop a piece of printed art using inspiration from a variety of contemporary artists.
- To develop a lino-print design.

#### PSHE – Dreams and Goals and Healthy me

- To recognise their worth as individuals, and to research, discuss and debate topical issues, problems and events.
- To reflect on spiritual, moral, social and cultural issues, using imagination to understand other people's experiences;
- To recognize how to meet challenges and cope with disappointments.
- To explore things that can have a negative impact on our bodies and our well- being.

#### PE

##### Spring 1

- Hockey and Gymnastics - to show a wide range of skills (Tackling, Passing and Movements).
- Pass effectively and confidently - to demonstrate a range of balances and travel movements

##### Spring 2

- Tennis, Health and Fitness and to Play competitive games and be able to rally confidently with a partner.
- To practice the full range of athletics events in preparation for sports day drawing on all terms work in PE.

## English

### Texts covered this term:

- Wolf Wilder – Katherine Rundell
- Lost Book of Adventure – The Unknown Adventurer
- Shackleton's Journey – William Grill
- I Talk Like a River – Jordan Scott

### Writing outcomes this term:

- Writing to entertain
- Writing to inform

Skills – Following the 2014 National Curriculum Expectations

## Science: Animals including Humans

- To identify and name the main parts of the human circulatory system, and explain the functions of the heart, blood vessels and blood
- To recognise the impact of diet, exercise, drugs and lifestyle on the way their bodies function
- To describe the ways in which nutrients and water are transported within animals, including humans.

## Maths

### Summer One

- SATS preparation

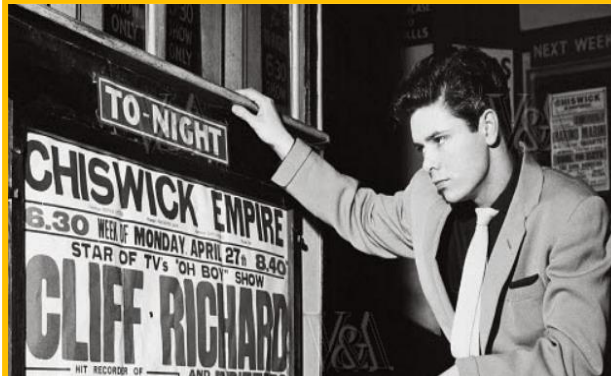
### Summer Two

- Secondary School transition work
- Use simple formulae to solve problems
- Generate and describe linear number sequences
- Find pairs of numbers that satisfy an equation with two unknowns
- Express missing number problems algebraically
- Enumerate possibilities of combinations of two variables

## Music

- Following the Music Express syllabus

# Year 6 Summer Term 23 - 24



### Visits and Trips

- Secondary School Visits
- Trip to local synagogue

### RE – Multi-faith unit and Judaism

- Exploring the following questions:
- Are religions a force for peace, conflict or both in the world?
- Why is growing up significant and how it is celebrated in the Jewish faith?

### Computing

- Developing spreadsheet skills using Google forms in order to evaluate and present data.
- To combine multimedia and edit film using iMovie.
- To use greenscreen to create an animation.

### History- How has life changed in Chiswick and wider London since the 1950s?

- Explore exciting changes in medicine since the 1950s.
- To understand the significant contribution migration has made to London through investigating the Windrush generation.
- Exploring how homes and possessions have changed since the 1950s and the impact on daily life.

### Geography- What similarities and differences exist between London, Barcelona and Beijing?

- Exploring differences in population and life expectancy across all three cities.
- Identifying differences in energy and trade.
- Comparing the physical features across all three cities and discussing their similarities and differences,

### Art/DT/Drama Unit

- To design, produce, evaluate and redesign an embroidered scented pillow.
- Sculpture Unit
- Acting, dance, singing lessons. Preparation for the Year 6 Production

### PSHE –Relationships and Changing Me

- In line with the school RSE policy.
- Secondary School Transition
- Discussing relationships within school, family and the wider community.

### PE

- Rounders and Cricket
- To show a wide range of catching, throwing and batting skills
- To work effectively as a team