

Grove Park Primary School

www.groveparkprimary.co.uk

Newsletter No 14

10th December 2010



HEADTEACHER NEWS

Our governors worked tirelessly yesterday to select a new Headteacher to lead Grove Park Primary School to an ever-successful future! Three candidates were shortlisted and each endured a rigorous set of tasks to achieve their goal, but only one candidate could take the prize. The governors were determined to find the best possible person, who suited our school and had clear vision and excellent interpersonal skills. By lunchtime the field was reduced to just one! Our School Council 'grilled' him before the governors made their final decision.

I am pleased to announce that Mr Alex Cornelius has accepted the post of Headteacher at Grove Park Primary School with effect from 1st September 2011. The governors will now work out a transition plan so that Mr Cornelius can get to know our school prior to taking up his new post. The governors will inform parents about the timetable for this, and give a few more details about Mr Cornelius as soon as they are able. There are a few technical administrative items to tend to before governors can discuss this plan with Mr Cornelius and Mrs Lee. As current Headteacher, I can say I am delighted with the appointment.

PARKING OUTSIDE OUR SCHOOL

Our Junior Road Safety Officers are very concerned when they see cars pull up on our zig-zag lines to deliver children to school. Mr Hardman supports them by keeping a note of offending vehicles, which are reported to the police. Recently a Police Constable and a Community policeman visited our school and spoke to the drivers of the cars whose number plates had been monitored. The police will write to drivers who park inconsiderately or dangerously, putting our children at risk. Please keep our entrance clear and park away from road corners. Thank you.

POPPY APPEAL: A huge thank you to everyone who bought a poppy from school. We raised £41.50 as a result of your generosity. Thank you.



Nursery parents and their children had great fun making Christmas cards with Mrs Mott after their morning's learning. Parents and children valued the time for family fun. Don't forget to look out for other workshops at school.



HOW DOES THE PTA SUPPORT OUR SCHOOL?

Every year the PTA works hard organising football tournaments, Christmas fairs, Quiz nights, Summer Fairs and loads of activities which bring our community together and raise lots of money. This is not only a great way to meet people and for Grove Park families to get together, but also incredibly beneficial for our school.

Have a look at this table that outlines expenditure over the past few years!

Academic Year	Expenditure £
2009/2010	10,153
2008/2009	17,089
2007/2008	13,739

In 2009-2010 the school was enriched by the following:

Outdoor Classroom	£2,000
Books	£2,000
Unofficial School Funds	£1,500
School Trips	£1,300
Musical Instruments	£1,000
Playground Lines	£700
Computers	£585
Christmas Events	£500
Classroom Resources	£450

This year the PTA hope to donate sufficient money to allow us to buy the following:

Termly £500 to support activities and focus weeks etc	£1,500
£50 per class (stickers, rewards, individual requirements)	£400
Books	£2000
Trolley for classroom IT storage (lockable) £1240 Laptops for one class 15 x plus warranty =£3,720	£10,540
Coach trips 8x £150 plus £150 contribution to year 5 camping	£1,350
Children's Christmas presents and elderly neighbours tea party etc	£500
Music	£500
Sport	£500
Listening Centre equipment including headphones	£800

That's a huge wish list and if the school gets all this, our children will be very privileged and have wonderful opportunities in their education.

Every time you bake a cake, man a stall, buy a raffle ticket, organise a major event, buy something from one of our stalls or contribute your time and energy, you are helping us achieve all this. Thank you.

REVISED PERSONAL SOCIAL EDUCATION (PSE) CURRICULUM

Grove Park has been working hard to review PSE and create a values-based cycle where children learn to make sensible choices. Our values are Trust, Respect, Empathy and Enthusiasm and have been extended to include Self-belief and Tolerance. Children will discuss these values within strands, focusing on physical wellbeing, emotional health and wellbeing, difference and diversity and relationships. We aim to encourage aspiration and economic capability as part of our citizenship module. Sex and Relationship Education (SRE) and Drugs, Alcohol and Tobacco Education have been included in this revision.

Don't forget parents are invited to hear our plans in details on **12th January at 6.30 pm**. There will be a further evening event on **Thursday, 20th January at 7pm** when Gill Hines will lead a workshop about talking to your children about sex and relationships. Please note this is NOT part of our curriculum, but is intended to provide support to families under the Extended School Agenda.

CLUB NEWS!

We are very excited to be able to announce the addition of a new club coming to Grove Park Primary School next term: **Rockscool!** Rockscool is suitable for five year olds upwards. It is set up for children who want to learn to play electric guitar or drums (and to enhance, rather than replace our existing drum lessons). Those who would like to sing will also be accommodated whilst learning their instrument. Rockscool has an emphasis on learning to play an instrument with an end product of performance playing in a band. Pupils can learn to read music, but the emphasis is on the enjoyment of learning an instrument and eventually being able to play in bands with fellow pupils. Recording skills will also be introduced, so that children have a good idea what being a rock musician is all about. Children of all abilities will be welcome.

Teaching will be from Travis Williams. Travis is a professional drummer, singer, guitarist and producer and has played with members of The Clash, The Sex Pistols, Whitesnake and many more.

If your child would like to join next term, please look out for the club booklet and fill in the Rockscool permission slip. The cost of the club will be £75 (£7.50 per lesson) or £65 for concessions.

Football Club News: One of the items that was raised recently in Parents' Forum was how quickly the football clubs fill up. We have since been in discussion with Tom (who runs the clubs) and have arranged for there to be two junior clubs from next term, one for Years 5 and 6 on a Tuesday and one for Years 3 and 4 on a Wednesday (infant football will remain the same on a Thursday). Hopefully this will mean that all children who want to join the football club will be able to do so and that the older and younger junior children will benefit from smaller groups.

Look out for the clubs booklet to be distributed on Friday, 7th January 2011.

PARENT SUPPORT ADVISER'S UPDATE

Look out for lots of information about Christmas holiday activities and a timetable for workshops during the spring term. This information is being emailed out via Parentmail.

KS 2 TRIP TO THE PANTO

Don't forget that it's the KS2 trip to Richmond theatre on Monday, 13th December. The children will have an early lunch at school to get to the theatre for 1.30 and will arrive back at school to be collected by approximately 4.30pm. No child will be allowed to go home unattended, so please be sure to be at school promptly to collect them. Thank you.

KS1 PANTO

The KS1 children will also have the opportunity to enjoy a pantomime production of Sleeping Beauty next Tuesday. If you haven't already handed in your permission slip and payment, please do so as a matter of urgency. Thank you.

END OF TERM

Just to remind you that next Friday, 17th December is the last day of term and the children finish school at 2.15 pm. The school is closed for children on Tuesday, 4th January for staff training and children come back to school on Wednesday, 5th January 2011 at 8.55 am.



DUKES MEADOWS CHILDREN'S CENTRE

XMAS TIMETABLE

ACTIVITY TIMETABLE MONDAY 13TH DEC 2010 - FRIDAY 24TH DECEMBER 2010
ADDRESS: CAVENDISH PRIMARY SCHOOL, EDENSOR ROAD CHISWICK W4 2RG

TEL: 0208 995 6175

PLEASE COME AT ANY TIME FOR A CHAT WITH STAFF- REMEMBER TO PHONE AND CHECK TO AVOID DISAPPOINTMENT

MON 13TH

STAY & PLAY
9:30-11:30



TUES 14TH

STAY & PLAY
9:30-11:30



WED 15TH

DUKES
MEADOWS
XMAS PARTY
12:00-2:00



PLEASE CALL
TO BOOK A
PLACE

THURS 16TH

STAY & PLAY
9:30-11:30

PICNIC &
PLAY
12:00-1:15

CADENZA
MUSIC
1:30-2:15
AGES
2YRS - 5YRS

FRI 17TH

CADENZA
MUSIC
9:45-10:30
11:00-11:45
AGES 0-5YRS

DAD'S ARTS &
CRAFTS
AFTERNOON
1:00-2:30

POSTNATAL
WITH
MIDWIFE
10:30-12:00



MON 20TH

NO SESSIONS



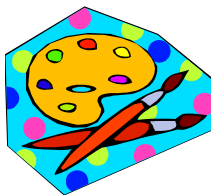
TUES 21ST

STAY & PLAY
9:30-11:30



WED 22ND

ARTS &
CRAFTS
9:30-11:00



THURS 23RD

NO SESSIONS



FRI 24TH

XMAS EVE

**MERRY
XMAS &
HAPPY
NEW YEAR**

FROM DUKES
MEADOWS
CHILDREN'S
CENTRE